



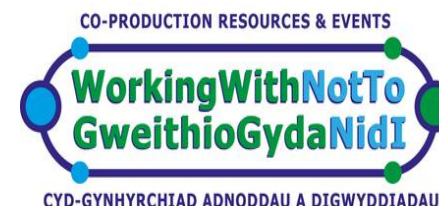
Co-production in Action, Now!

- Across Wales

Paul Swann

**Policy Officer (Independent Living),
Disability Wales &**

Interim Chair, Co-production Wales



- **Social Model & Independent Living**
- **Ecological & Economic Issues**
- **Citizen Directed Support**
- **Co-production Wales**

Social oppression describes a power relationship of dominance and subordination between different groups of people in society, in which one benefits from the systematic abuse, exploitation and injustice directed towards the other.

Disability is something imposed on top of our impairments by the way we are unnecessarily isolated and excluded from full participation in society.

The loss or limitation of opportunities to take part in society on an equal level with others due to institutional, environmental and attitudinal barriers.

All policies and services should be designed in light of the Social Model, ensuring that our actions do not cause barriers which disabled people with impairments and prevent equality.

Independent Living enables us as disabled people to achieve our own goals and live our own lives in the way that we choose for ourselves.

An enabling society in which disabled children and adults enjoy the right to Independent Living and social inclusion.

Progress on Independent Living depends on four core values:

- Confidence
- Co-operation
- Co-production, and
- Choice & Control.

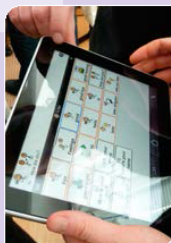
Disabled people working in partnership with public services and the private sector to identify problems and solutions, tackle delivery issues, and maximise opportunities for improvement.

Framework for Action on Independent Living



Llywodraeth Cymru
Welsh Government

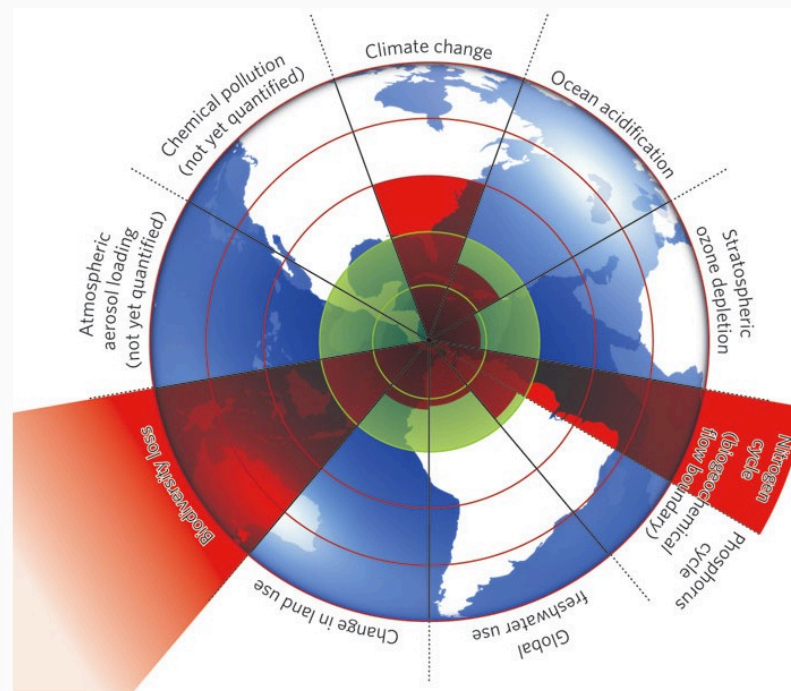
www.cymru.gov.uk



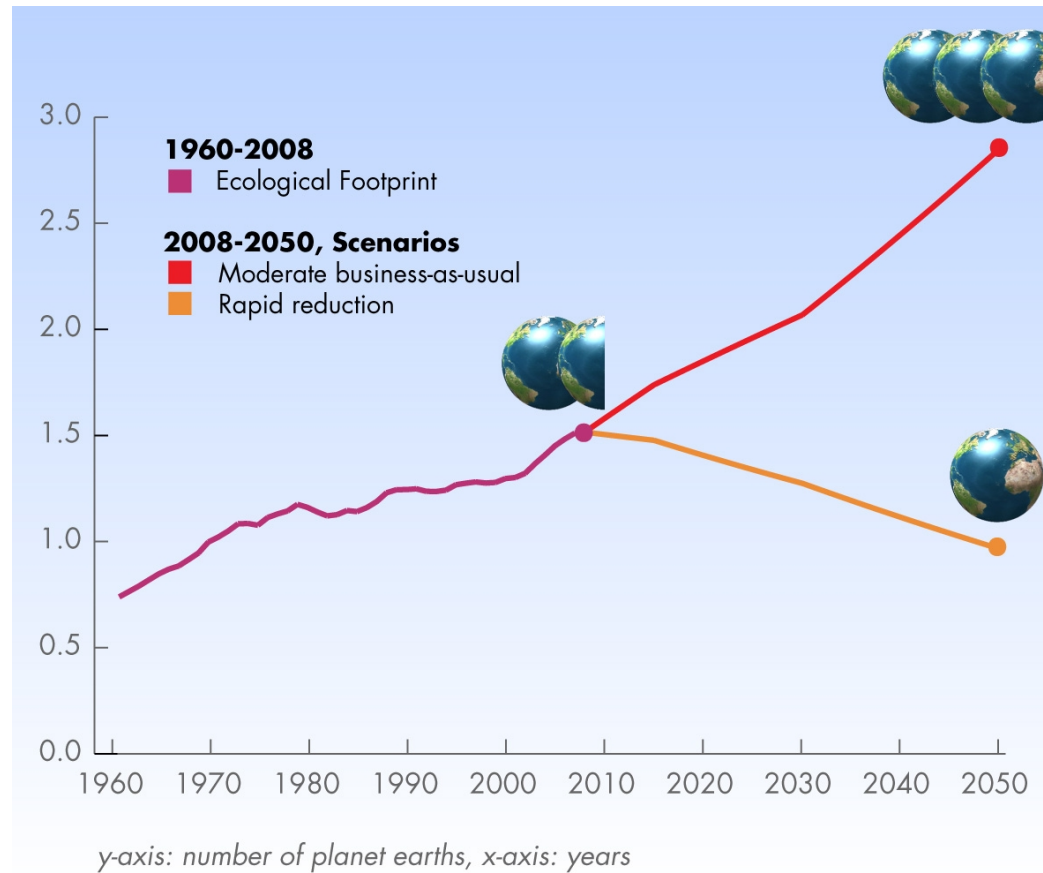
CO-PRODUCTION RESOURCES & EVENTS

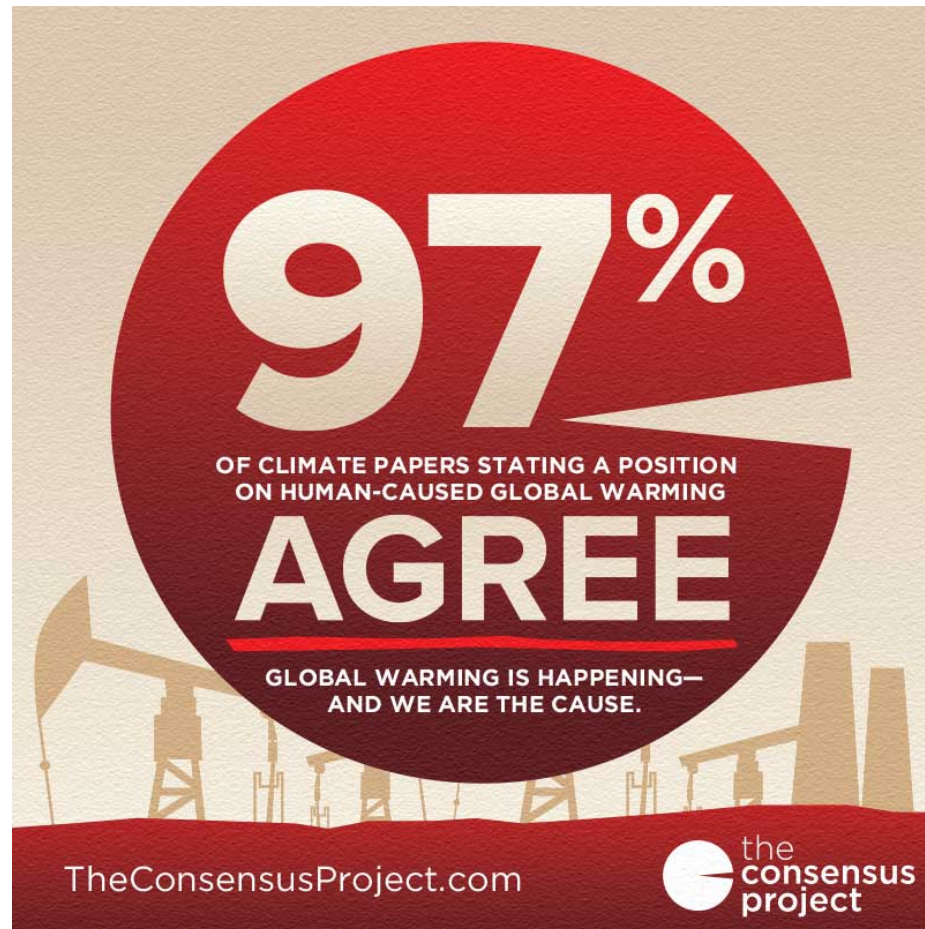


CYD-GYNHYRCHIAD ADNODDAU A DIGWYDDIADAU



The inner green shading represents the proposed safe operating space for nine planetary systems. The red wedges represent an estimate of the current position for each variable. The boundaries in three systems (rate of biodiversity loss, climate change and human interference with the nitrogen cycle), have already been exceeded.





Climate change is a civilizational wake-up call, telling us that we need an entirely new economic model based on justice and ecological sustainability.

We have no option but to move out of our comfort zone...either voluntarily or otherwise.

Climate change calls on us to be bold and ambitious, and it enflames our vision of a better world with existential urgency.

- Naomi Klein

	Net borrowing		Net debt	
	£ billion	% GDP	£ billion	% GDP
2009/10	158	11.0	828	56.4
2010/11	140	9.3	1,005	65.9
2011/12	118	7.7	1,106	71.1
2012/13	116	7.4	1,182	74.2
2013/14	120	7.5	1,286	79.2
2014/15	108	6.5	1,398	82.6
2015/16	96	5.5	1,502	85.1
2016/17	67	3.7	1,580	85.6
2017/18	43	2.3	1,637	84.8

Source: ONS, OBR. Excludes financial sector interventions

Note: borrowing figures exclude Royal Mail transfer and QE

We have a decade to act before the economic cost of current viable solutions becomes too high. Without action we risk catastrophic and perhaps irreversible changes to our life-support system.

- Elinor Ostrom

Figure 1. The Insider Domain of Health Service Production: A Traditional View

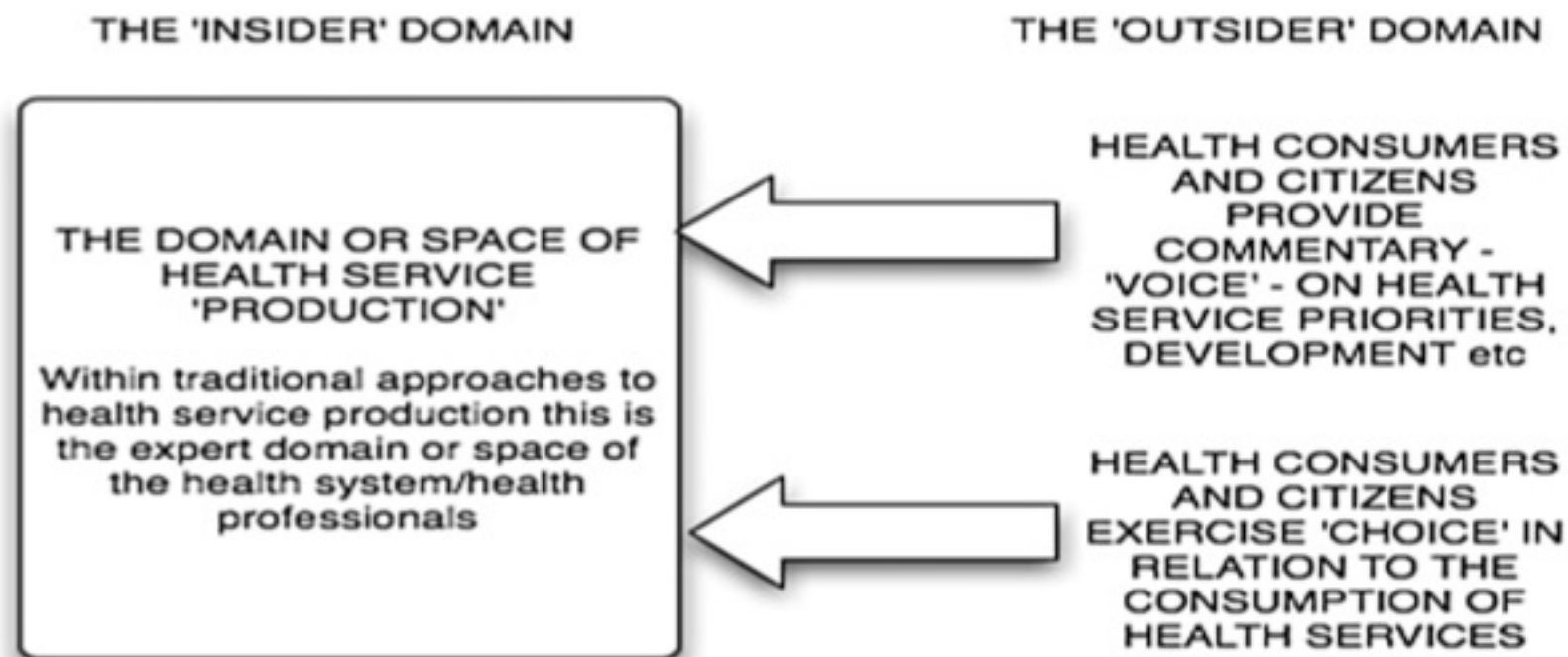
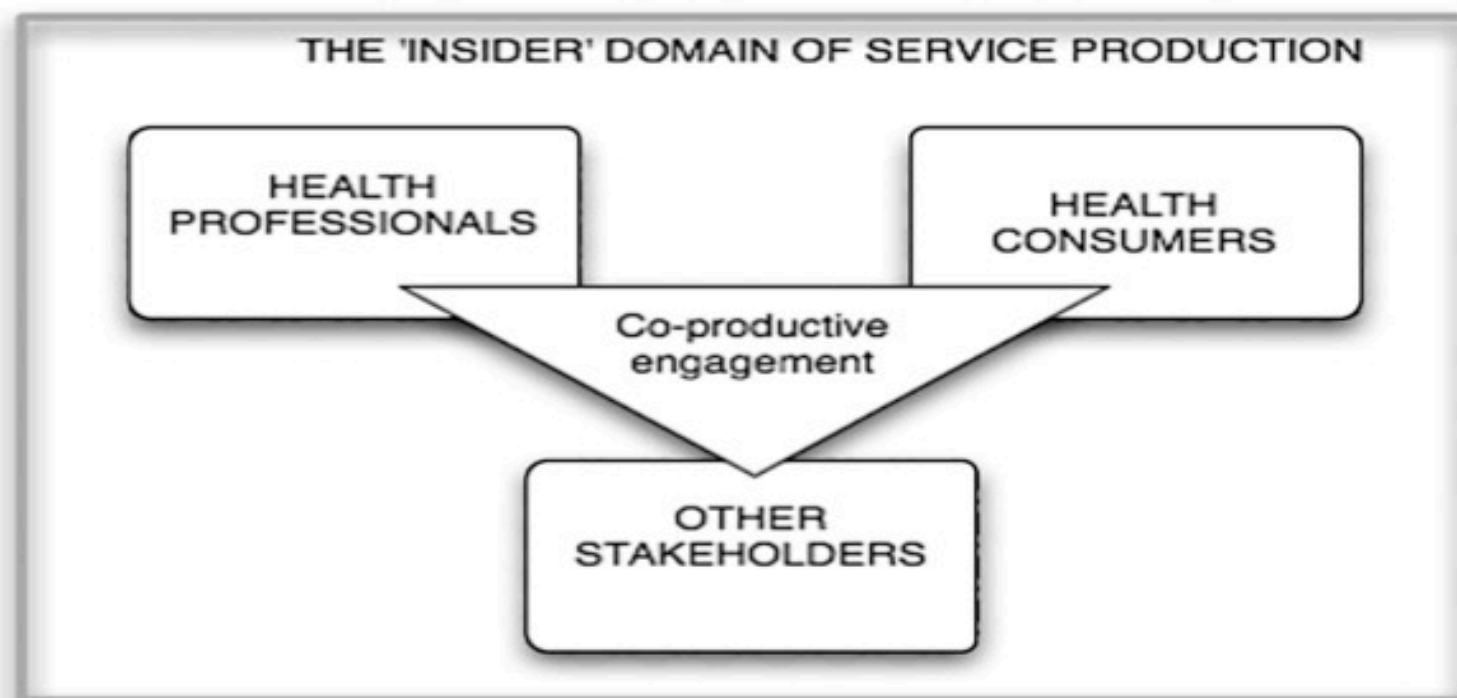


Figure 2. The Insider Domain of Health Service Production: A Co-Production View

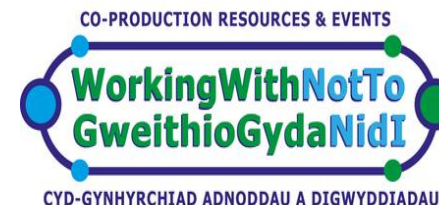


The core principles of Citizen Directed Support are:

- choice & control
- inclusive communities
- culture change
- healthy relationships



Co-production Wales' social mission is to build on the best of our traditions of co-operation and mutualism to transform Wales into an enabling society that places co-production principles at the heart of its public services, its communities, the lives of its citizens, and in protection of its environment.





Paul Swann

Policy Officer (Independent Living)

Disability Wales

paul.swann@disabilitywales.org

02920 887325

